



## Overview

TIP was very fortunate this month to be able to finalize an agreement with the town of Upham in Langlade County for inventory and control work. This is the first such agreement to be made between an individual township and TIP so it is very exciting. We are looking forward to serving the town! Also in August the coordinator was fortunate enough to be able to attend Leaderfest in Oneida County, a one day conference which focused on bridging the age gap in a multigenerational workforce. Additionally in August TIP performed extensive inventory and control operations on Wild Parsnip and Japanese Knotweed.

## Educational Outreach

### August Reach Review

Due to the amount of field work which needed to be done TIP did not engage in many presentations or outreach events in August. However the outreach which TIP did engage in was of great quality. Most notable TIP met with the town of Rolling in Langlade County to both inform them to the severe Wild Parsnip infestation they are facing and discuss how TIP can help them to mitigate that particular infestation.

If you have any interesting invasive species stories you wouldn't mind sharing, contact TIP and we'll see about sharing it!

## Inventory & Control

### August Review

With assistance from the Langlade County Land Conservation office TIP was able to return to the sites infested with Wild Parsnip which we treated in July. Overall it appears to have been successful in knocking them back, however it will take more visits to completely deplete the seed bank in those areas of heavy infestation. The Langlade County Forestry Department was very helpful in allowing TIP to utilize their brush mower to cut some areas infested with Japanese Knotweed, these areas will need to be retreated once the plants begin to bolt again though. One such area is the canoe portage at the Post Lake dam (pictured on the right). It is a common misconception that silent sports don't spread invasives. But any traffic (even animal traffic) has the potential to spread invasives. TIP also did some inventory of the Town of Upham roads, however we will need to return at another time to determine the presence of species which are not readily visible at this time of year.

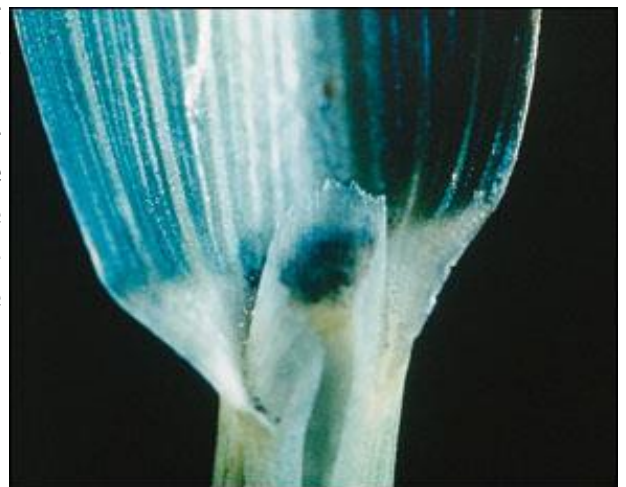


### Invasive Species Spotlight: Johnson Grass

Johnson Grass (*Sorghum halepense*) has actually been named in the top ten invasive plants in the world and is prohibited in Wisconsin under NR40. Prohibited species are species which have not been heavily established in the state yet and therefore landowners are obligated by law to control them if they appear on their property. Originally brought to North America as a forage crop it has since proliferated and become an agricultural pest in many states. Able to produce over 80,000 seeds which remain viable for up to ten years and 275 feet of rhizomes in a single growing season it is easy to see how such a plant could spread far and wide if left unchecked. As with all invasive plants the best way to control them is to prevent their establishment in the first place by addressing colo-



nizing populations early. Johnsongrass typically grows 6 to 8 feet tall and its main identifying features include: jagged-edged, membranous ligule (pictured on the right) in the vegetative stage and cream colored rhizomes with orange scales.



***Do you have a mystery plant? Or a suspected invasive species?***

TIP and our partners are more than happy to help you identify any mystery plants you have. Just give the TIP Coordinator a call (715-799-5710 ext. 3) or email

## Funding & Organizational Development

### August Financial Review

After many weeks of discussion TIP has finally secured a contract with the town of Upham for \$5,000 to inventory of their roads and control. We do not anticipate future agreements of this nature taking as much time to finalize. We are also in the process of discussing a similar agreement with the Town of Rolling for next field season and plan on taking this information to a meeting of the Langlade County Towns Association to try to get others on board as well. A grant from the USFS for \$36,399.80 is currently being processed and should be available by the end of next month. This grant would be for eradication of known infestations and reseedling of those areas with native plants. Also TIP has decided to request \$10,000 from Lumberjack RC & D to support general coordinator wages (attending meetings, giving presentations, things that are not covered by other grants) and an intern to help conduct some of the field work next season as there is getting to be too much for one person to handle.

Category	Costs
Labor	3,383
Mileage	76.68
Supplies/	25
Total available	30701.41

## Looking Forward

### Coordinator's Focus

Going into September the I'll be focusing heavily on Japanese Knotweed treatments. The species is very prevalent across much of the TIP area and controlling it is a high priority. Another major area of focus will be pulling together all the necessary requirements for our application to Lumberjack RC & D for a grant for next year. This application is due on the first of October, but we only need one more LCC to sign off on it so we are right on track. Additionally I'll be working a lot on the Town of Upham project and consulting with the town of Rolling to hopefully finalize an agreement with them.

### Coordinator's Availability

I anticipate work out of Antigo a lot next month, I will be available though for any other concerns that come up. As I anticipate being in the field often the best way to reach me will be through email, however I will continue to respond to messages on left on the answering machine.



## LUMBERJACK

RESOURCE CONSERVATION & DEVELOPMENT COUNCIL, INC.

Serving Florence, Forest, Langlade, Lincoln, Menominee, Oconto, Oneida, Shawano & Vilas Counties in Northeast Wisconsin, U.S.A.

# Important Dates

## September

12: TIP Steering Committee Meeting

16: Oconto County Fly-in

## October

18: Lumberjack RC & D Council Meeting

## November

1: Statewide AIS/CISMA Meeting

## How Can You Get Involved?

### Action Teams

Action teams are meetings to discuss invasive species issues and plan treatment relevant to the member's area of interest. Who is a member of an Action team? Anyone willing to attend the meetings.

### Volunteering

Volunteers help in the manual removal of invasive species from public lands and ditches within the CISMA, and are most welcome! Scheduling is flexible so please contact TIP Coordinator at the information below to establish a date and time you would like to volunteer.

### Donations

For monetary donations, please contact Tracy Beckman at (715)369-9886.

### Stay informed

Follow us on Facebook, visit our website ([timberlandinvasives.org](http://timberlandinvasives.org)), or sign up for TIP's email list.



### Contact the Coordinator

Email: [timberlandinvasives@outlook.com](mailto:timberlandinvasives@outlook.com)

Phone: 715-799-5710 extension 3

Mail: P.O. Box 279  
Keshena, WI 54135

