



Overview

What a HOT July we had in 2016! There were a lot of days it was “too hot to work,” but we did anyway. The highlights from this month are:

- TIP's reach rate continues to grow.
- Our coordinator is now a walking specimen!
- Keep an eye out for Japanese Knotweed, Cut-Leaved Teasel, Spotted Knapweed, and Phragmites in August.
- Cut-Leaved Teasel has been found in Elton.
- Langlade County passed a resolution to support TIP.
- Langlade County will have a new invasive species position next year.
- Our finances are looking strong for 2016 & 2017.



Stick Insect by April Arrowood

Education & Outreach

Reach Update

July is always a great month for outreach, and this year is no exception to the rule. This year, TIP was still able to reach over 1,365 people using 89.5 Coordinator hours (15.2 people per coordinated hour). This brings TIP's year-to-date reach to 10,200+ as compared to 5,000 this time last year.

Specimen Walks Among Us!

July saw TIP meeting face to face with a lot of people. We were present at numerous meetings, gave a presentation at Camp Susan, and shared booths at the Fleet Farm Kid's Fishing Day and the Langlade County Fair. A big conversation piece at these events was the results of the unfortunate skin-to-sap contact I had while hand pulling some Wild Parsnip (see pic). The blisters and scars were a very valuable teaching tool* for the young and old.



Wild Parsnip Burn Scars– Chris A.

*NOTE: Despite the value of firsthand experience, I did not willingly give myself these burns. In addition to being painful and leaving scars, some research shows chemicals in the sap may also be carcinogenic.

Phenology

August Priority Species

Japanese Knotweed

What to look for:



ID: Japanese Knotweed is typically described as a 10ft tall bamboo with big leaves and white flowers.

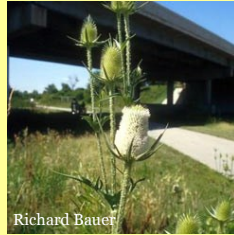
Status: Flowering soon.

Where to look:

Streambanks, lakesides, and the neighbor's hedges.

Cut-Leaved Teasel

What to look for:



ID: Cut-Leaved Teasel has a distinctive cone-like white/green flower will long bracts, and a spiny stem.

Status: Flowering

Where to look:

Roadsides. Species is spreading rapidly.

Spotted Knapweed

What to look for:



ID: Spotted Knapweed is often described as a "spineless thistle."

Status: Flowering

Where to look:

Spotted Knapweed loves sunny & sandy conditions such as roadsides, gravel pits, and prairies.

Phragmites

What to look for:



ID: Commonly over 10ft tall, Phragmites is easy to spot, but can be a challenge to identify properly, so contact TIP.

Status: Flowering

Where to look:

Wet and sunny spots. Roadsides & beaches.

Inventory/Control

Triangulating Teasel

On July 25th TIP's partners in Langlade County discovered Cut-Leaved Teasel in Elton, WI (Picture on page 1). Cut-Leaved Teasel is a new species to the TIP area, so report any populations you know of to TIP. This invasive has the potential to become as common as thistles, but is larger and more difficult to get rid of.

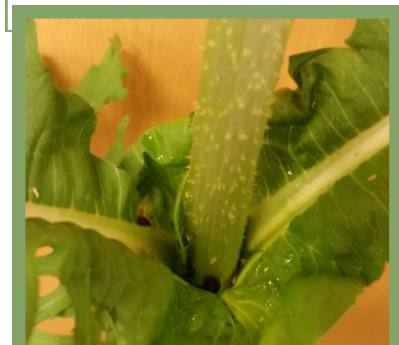


Cut-Leaved Teasel

Like all invasive species a combination of techniques should be used to control Teasel. An example strategy would be to dig rosettes in spring, with care to remove the entire root; spraying plants with triclopyr prior to bolting; mowing bolted plants in the full bud stage, burning plants that have flowered, and spraying rosettes in the fall with glyphosate.



Cut-Leaved Teasel Flowers



Cut-Leaved Teasel Stem

Organizational Development

Resolution to Support TIP

On July 19th the Langlade County Board of Supervisors voted unanimously to adopt the Resolution to Support TIP. A similar version of this resolution was adopted last month by the Menominee County Board. The purpose of this resolution is to acknowledge invasive species as a problem of regional concern, and allow the county department heads to budget for financially supporting the Timberland Invasives Partnership.

Investing Against Invasives

Also on July 19th, the Langlade County Board of Supervisors voted to approve the creation of a seasonal, casual employee position to help manage invasive species on the Langlade County forest. The position will work for up to 1,000 hours in 2017 doing a variety of control and inventory work focusing mainly on Garlic Mustard. The county hopes to evaluate the effectiveness of the position vs contracting for control work at the end of 2017 and determine if the position will continue in future years.

Funding

July Overview

July was a slow month from a financial point of view. We were awarded \$300 by the Wisconsin Department of Natural Resources from the Invasive Plant Suppression Fund to reimburse our efforts this year in controlling Policeman's Helmet. Expenses in July were relatively minimal with only 89.5 coordinator hours being used and limited mileage and supply expenses.

Summary of TIP's Finances

As always, we are continuing to seek more projects and funding from all avenues. At the present time we have enough funding to keep the organization running at its present capacity for at least 17 months or until January 2018.

Reminder to Partners

Just as a reminder to those with projects in mind, we are grant funded. That means to see TIP work in your area, you must include funding in your budgets or work with us to develop grant proposals that will help cover the costs of our involvement.



LUMBERJACK

RESOURCE CONSERVATION & DEVELOPMENT COUNCIL, INC.

Serving Florence, Forest, Langlade, Lincoln, Menominee, Oconto, Oneida, Shawano & Vilas Counties in Northeast Wisconsin, U.S.A.

Upcoming Events

August

5: Tri-CISMA Coordinator's Meeting. 3:00 PM - 5:00 PM in Phlox, WI. The Timberland Invasives Partnership (TIP) will be hosting a meeting of TIP, the Wisconsin Headwaters Invasives Partnership (WHIP), and the Wild Rivers Invasive Species Coalition (WRISC) Coordinators to discuss regional invasive species management and networking concerns for Northeast Wisconsin.

9: Policeman's Helmet Pull. 10:00 AM-12:00 PM Shawano, WI. TIP will be out inventorying and hand pulling this prohibited invasive species. If anyone is interested in helping out, contact the TIP Coordinator, Chris Arrowood at 715-799-5710 x 3 or timberlandinvasives@outlook.com.

16: TIP Steering Committee Meeting. 1:00 PM—3:00 PM in Keshena, WI. TIP's Partners will be meeting in Keshena, WI to discuss important TIP affairs. In particular, we will be looking at the GLRI grant opportunity, updating our strategic management plan, discussing the coordinator's work focus. Please feel free to attend and voice your opinions!

September

20: TIP Executive Committee Meeting. 11:00 AM-12:00 PM via Conference call. The TIP Executive Committee will holding its regularly scheduled September meeting.

Check out the [TIP Calendar Online](http://www.timberlandinvasives.org) at www.timberlandinvasives.org for more events!

How Can You Get Involved?

Action Teams

Action teams are meetings to discuss invasive species issues and plan treatment relevant to the member's area of interest. Who is a member of an Action team? Anyone willing to attend the meetings.

Volunteering

Volunteers help in the manual removal of invasive species from public lands and ditches within the CISMA, and are most welcome! Scheduling is flexible so please contact TIP Coordinator at the information below to establish a date and time you would like to volunteer.

Donations

For monetary donations, please contact Tracy Beckman at (715)369-9886.

Stay informed

Follow us on Facebook, visit our website (timberlandinvasives.org), or sign up for TIP's email list.

Timberland
Invasives
Partnership



Contact the Coordinator

Email: timberlandinvasives@outlook.com

Phone: 715-799-5710 extension 3

Mail: P.O. Box 279

Keshena, WI 54135



STOP INVASIVE SPECIES
IN YOUR TRACKS.

PlayCleanGo.org