



## Overview

In this report I have summarized and reviewed all reported TIP activities/impacts since I took the reins on the coordinator position in May of 2017. The last year has certainly been an exciting one for TIP with several noteworthy milestones including:

- 67 new invasive species populations reported in 2017.
- 55.7 acres of invasive species treated.
- 8491 people reached by various means including Facebook, morning radio appearances, the website, presentations and newsletters.
- New local partnerships forming!
- \$32,738.21 spent to operate TIP in 2017.



TIP shared a booth with the Langlade County Land Conservation Department at the Langlade County Fair this summer.

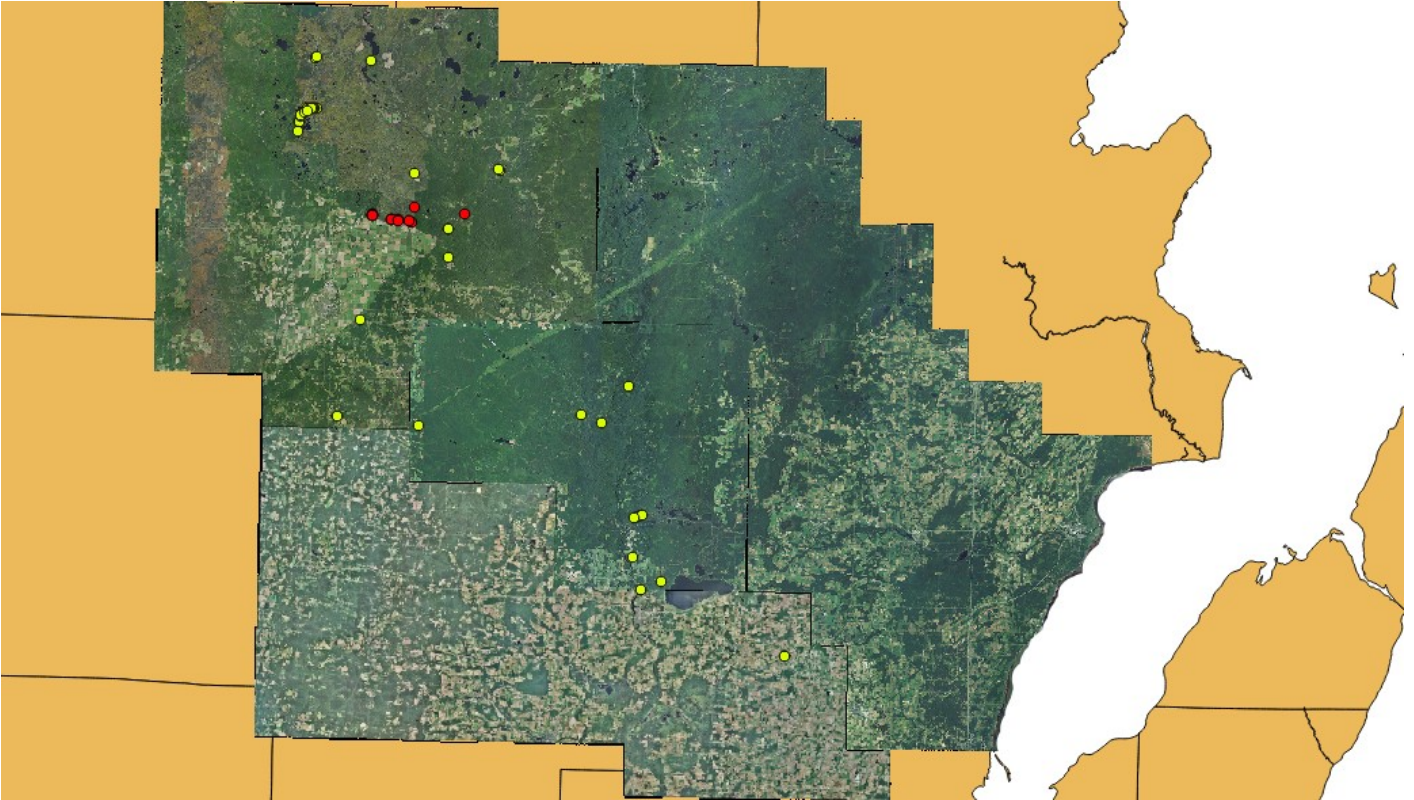


This is what the spread for the Timberland Invasives Partnership both looks like at the majority of events we attend.

## Education and Outreach

In 2017 the Timberland Invasives Partnership spent 289 hours on education and outreach events. One of the most memorable was the White Lake Elementary Lake Day. For this event we thought it would be wise to incorporate a game into the lesson because we thought it would stick with the children better than simply presenting to them. So we developed our own version of the classic game tag. To demonstrate the effect of invasives ability to out compete native plants we divided the class into two groups, representing native and invasive species and put a special restriction on the native species. The native species were not allowed to take more than ten steps at a time before they had to stop and count to 5. This made them more vulnerable than the invasives to the “predator” or tagger. This demonstrates how invasive species face less pressure from predators than native species. It defiantly seemed to stick well with the children.

## Inventory and Control

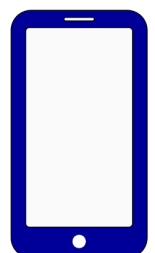


In 2017 TIP inventoried 67 new populations of invasive species across the region. Sites inventoried under the WMA 2017 project are represented in red. This project focused on inventorying Garlic Mustard populations on private lands which the Augustyn Springs Trail system passes through. The populations in yellow represent Garlic Mustard, Wild Parsnip, Spotted Knapweed, Japanese Knotweed, Buckthorn, and Honeysuckle. These populations were surveyed under various other TIP grants and contracts.

In 2017 TIP did control work on 55.7 acres on over 30 sites. 19 of the sites are spot treatments which required multiple treatments in the season to get success. Species that control work was done on included Garlic Mustard, Wild Parsnip, Japanese Knotweed, Buckthorn and Honey Suckle.

### **See something that looks out of place or like its taking over but you're not sure what it is? Report it to MISIN!**

MISIN, the **Midwest Invasive Species Information Network** has a cellphone app that will allow you to record the location, size, species and even include images of the plant in question all in a few seconds. Their team of experts will then verify the species based on the images you upload and it will be added to the database for the entire Midwest. It's a great and easy way to get involved and contribute to the fight against invaders.



## Funding and Organizational Development

### 2017 Organizational Milestones

2017 marked a few big changes for TIP. Our former coordinator Chris Arrowood, had to step away from TIP to move on to bigger things. I stepped in behind him and could tell right away that I had big shoes to fill. Soon after taking over the coordinator position I was contacted by Pete Resch, the chairmen for the Town of Upham in Langlade County. He contacted me to notify that the town was interested in having someone do something to control the invasives in their town and had set aside funds in their budget to do so. Together we put together a contract between the Town and TIP for us to perform an inventory of their town roads and control work if necessary. This partnership has prompted another township, Rolling also in Langlade County, to seek out a similar relationship.

In 2017 \$32,738.21 was spent to maintain TIP. This money comes primarily from several Great Lakes Restoration Initiative grants, Lumberjack RC & D grants, as well as contracts with local governments including the Menominee Indian Tribe of Wisconsin.

## Looking Forward

### Coordinators Focus and Vision

Going forward the coordinator will be focusing on growing current partnerships as well as expanding and forming new partnerships, particularly with local governments. It has always been the mission of TIP to provide local solutions for local groups. Thanks to the Town of Upham for getting the ball rolling and being the first township to dedicate funds for invasive species management other municipalities are seeing the benefit TIP can provide as a local alternative to expensive contractors who are often times not located in the region. The adage that “a little goes along way” certainly applies in the case of TIP because if we can get multiple municipalities chipping in we can certainly maintain TIP as an organization as well as do a lot of good work on the ground. In past years there has not been a lot of funding available to do restoration work. But that has changed with the current GLRI grant and it is the coordinators intention to do restoration Wild Parsnip locations in Langlade County where we have had success controlling the populations.



## LUMBERJACK Resource Conservation and Development Council, Inc.

Serving Forest, Florence, Langlade, Lincoln, Oconto, Oneida, Menominee, Shawano & Vilas counties in Northeast Wisconsin, U.S.A.

## 2018 Scheduled Events

State CISMA/AIS Coordinators Conference—March 6th, 7th, and 8th

Spring Brook Culvert Restoration—May and April

Naturefest - June

Garlic Mustard Control/Inventory—April to November

Langlade County Fair— July

Steering Committee Meetings—held quarterly, if you wish to attend a steering committee meeting just ask the coordinator and he can let you know when the next one is.

Oconto County Fly-in—August

Wild Parsnip Control/Inventory—May through August

Japanese Knotweed Control/Inventory—June through September

Timberland Invasive Partnership is always seeking education and outreach events, if you would like us to present to your group or organization please feel free to contact the coordinator.

## How Can You Get Involved?

### Volunteering

TIP is always in need of extra hands and there are lots of opportunities to help out. If you like to get hands on contact the coordinator and he will be able to set up a date you can join the crew in the field. If digging in the dirt is not your forte but you still want to help out we are always grateful to have people help out at education and outreach events.

### Donations

If you are interested in donating money, time, or equipment you may contact either the coordinator or Lumberjack RC & D Administrative office directly at (715) 369-9886.

### Staying informed!

If you would like to receive updates directly from TIP feel free to send an email to [timberlandinvasives@outlook.com](mailto:timberlandinvasives@outlook.com) and you will be placed on the list.



Contact the TIP Coordinator at:  
[timberlandinvasives@outlook.com](mailto:timberlandinvasives@outlook.com)  
 715-799-5710 extension 3