



## Overview

As of May, a new TIP coordinator has stepped in. Alix Bjorklund completed her first day on May 15, and has been joined by TIP's new invasives species technician, Dave Wiebelhaus. They have hit the ground running on this field season to ensure the progress made by TIP continues.



### Highlights:

- TIP has been awarded the US Forest Service's GLRI CWMA grant.
- So far this season, garlic mustard, spotted knapweed and wild parsnip control work has been completed.
- Kid's Fishing Day in Antigo had a TIP booth set up, where the coordinator educated kids and their families on invasive pathways.

## Education & Outreach

### Reach Review

TIP's reach has been only moderate so far this summer, as the coordinator started with the field season already underway. The coordinator has attended a presentation to the Menominee County Highway Department with Jeremy Johnson on invasives, and manned a booth at Kid's Fishing Day in Antigo. Although to date outreach in person has been limited, Facebook reach is up to 385 persons in the last two months, compared to 140 last year during the same time period. Additionally, the coordinator has interviewed twice on the BK Breakfast Club radio broadcast with Gary Hartl.



Do you have an interesting invasive species story? Contact us and we would love to share it!

[timberlandinvasives@outlook.com](mailto:timberlandinvasives@outlook.com)

(715) 799-5710

# Inventory & Control

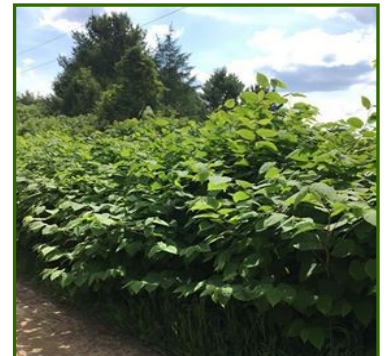
## Field Season Review

TIP kicked off the 2018 season by spraying various garlic mustard locations within Menominee County. Since June, TIP has tackled spotted knapweed and wild parsnip throughout Menominee and Langlade counties. As the season progresses, efforts will move to spraying garlic mustard rosettes missed early in the season, while continuing to control for wild parsnip. After other plants have senesced later in the year, honeysuckle and buckthorn work will start.

Inventorying of species occurrence and population has been up to speed, as all populations encountered by TIP have been uploaded to the Midwest Invasive Species Information Network.

## Invasive Species Spotlight: Japanese Knotweed

Classified as a restricted species in Wisconsin, Japanese Knotweed can cause big problems for Wisconsin residents! Standing as tall as 10', this bamboo-like plant has been known to grow through roads and even concrete foundations. Japanese Knotweed grows from rhizomes, and is usually spread to new areas by transplanted dirt containing them. The flowers produced are white and clustered, and the plant can release an allelopathic compound, one that is toxic to nearby vegetation.



Populations are difficult to remove once they are established and seem to be popping up more often. If you see something that you believe could be Japanese Knotweed, snap a picture and contact TIP or the WDNR.



*Do you have a mystery plant or suspected invasive species?*

TIP and our partners are more than happy to help identify any mystery plants you have. Just give the TIP Coordinator a call or email with your contact information!

(715) 799-5710 x3

[timberlandinvasives@outlook.com](mailto:timberlandinvasives@outlook.com)

# Funding and Organizational Update

## July Financial Review and Update

The cost to coordinate TIP has been around average this field season so far. As of right now TIP has about \$75,000 in funding, which has allowed for planning of new projects for the rest of this year into the 2019 field season.

As of April 13th, 2018, TIP was awarded the Great Lakes Restoration Initiative's Cooperative Weed Management Area grant. This \$30,000 grant will be of great use in control operations for the remainder of the year and all through 2019 in TIP's four-county area. Because this is such a good source of funding for control work, TIP has plans to hire a small crew for the 2019 field season in order to keep up with the necessary work to be done.

## Contracts and Funding

TIP has completed all surveying for the Towns of Rolling and Upham. Moving forward, the coordinator hopes to secure contracts with other townships within the CISMA area, as well as continue to work closely with towns already contracted.

## Looking Forward

### Coordinator's Focus

For the remainder of this field season, the coordinator will be focused on wrapping up property surveys in Langlade County for the WMA grant, in addition to completing control operations throughout August and September.

### Coordinator's Availability

Despite field activities the coming month, I will be available most days with some notice. Feel free to contact me with any questions, comments, or concerns!



## LUMBERJACK

RESOURCE CONSERVATION AND DEVELOPMENT COUNCIL, INC.

Serving Florence, Forest, Langlade, Lincoln, Menominee, Oconto, Oneida  
Shawano, and Vilas Counties in Northeast Wisconsin

# Important Dates

## July 2018

**26:** Quarterly Lumberjack RC&D Meeting, 9:30 AM Boulder Junction, WI

## August 2018

**6:** Langlade County LCC Meeting, 9:00 AM Antigo, WI

**9:** Menominee County LCC Meeting, 9:00 AM Keshena, WI

**16:** Lumberjack RC&D 50 Year Celebration, 4:00 PM Rhinelander, WI

**18:** AIS Snapshot Day, 8:30 AM White Lake Community Center, White Lake, WI

**20:** Oconto County LCC Meeting, 9:30 AM Oconto, WI

Check out TIP's calendar online at [www.timberlandinvasives.org](http://www.timberlandinvasives.org) for more events!

## How Can You Get Involved?

### Action Teams

Action teams are meetings to discuss invasive species issues and plan treatment relevant to the member's area of interest. Who is a member of an action team? Anyone willing to attend the meetings.

### Volunteering

Volunteers help in the manual removal of invasive species from public lands and ditches within the CISMA, and are most welcome! Scheduling is flexible so please contact the TIP Coordinator at the information below to establish a date and time you would like to volunteer.

### Donations

For monetary donations, please contact Tracy Beckman at (715)-369-9886.

### Stay Informed

Follow us on Facebook, visit our website, or sign up for TIP's email list.

Timberland  
Invasives  
Partnership



### Contact the Coordinator:

**Email:** [timberlandinvasives@outlook.com](mailto:timberlandinvasives@outlook.com)

**Phone:** (715) 799-5710 x3

**Mail:** PO Box 279 Keshena, WI 54135